

# ELECTRIC SLIDE-IN RANGE SPECIFICATIONS



## DIMENSIONS & WEIGHT

Width	29 7/8"
Depth	26 1/2"
Height	35 15/16"
Net Weight	176.4 lbs
Shipping Weight	216.1 lbs

## CONTROL

Oven Control	Stainless Steel Touch
Cooktop Control	Touch
Display	White, Red VFD
Electronic Clock & Timer	Yes
Control Lock Function	Yes
Clock	12hr or 24hr (option)
Temperature Unit of Measure	°F or °C (option)
Cooking Complete Reminder	Yes

## WARRANTY

Limited Warranty	3 Year
------------------	--------

## INFORMATION

Model	UPSE3024ST
-------	------------

## SMART FUNCTION

Wi-Fi	Yes
-------	-----

## COOKTOP

Top Material	Stainless Steel
Knobs Material	Aluminum
# of Elements	5
Elements Power	
- Left Rear	6" (1,200 W)
- Right Rear	6" (1,200 W)
- Center Rear (Single Oval)	7" (100 W)
- Left Front	9"/6" (3,200 / 1,400 W)
- Right Front	12"/9"/6" (3,000 / 2,200 / 1,100 W)

## OVEN

Capacity	6.3 cu. ft.
Oven Cleaning	Self Cleaning & Speed Clean™
Variable Cleaning Time	Self Cleaning (2,3,5 hrs), Speed Clean™ (10 min.)
Easy Swivel Handle™	Yes
GlideShut™ Door	Yes
Broil Element	1,600 W / 2,400 W
Convection Element	2,500 W
Convection Conversion	Yes
Convection System	Pro Heat™ Convection System
# of Rack Positions	7
Audible Preheat Signal	Yes
Oven Meat Probe	Yes
Automatic Shut Off	After 12 hours
Temperature Display	Yes
Interior Oven Light	Yes

## DRAWER

Type	Warming
GlideShut™ Door	Yes
Heating Element	500 W
Capacity	0.8 cu. ft.

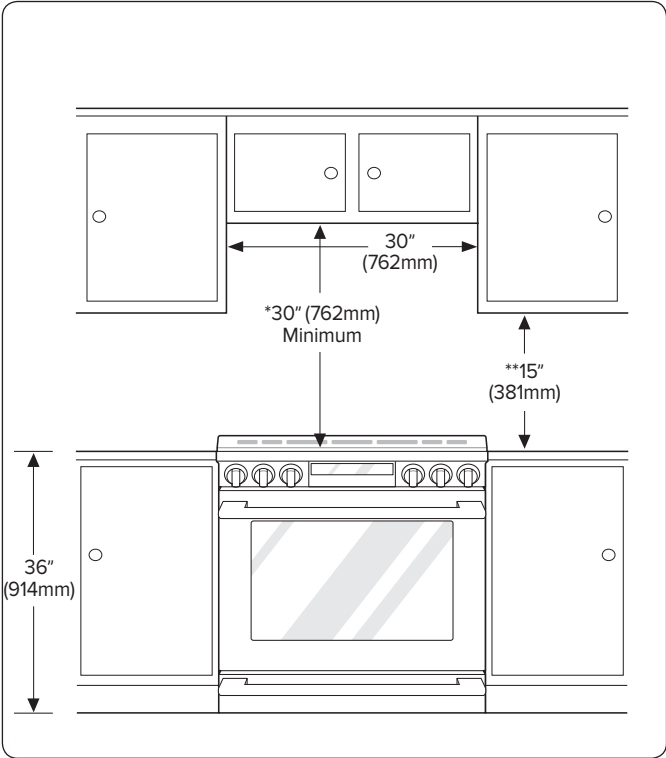
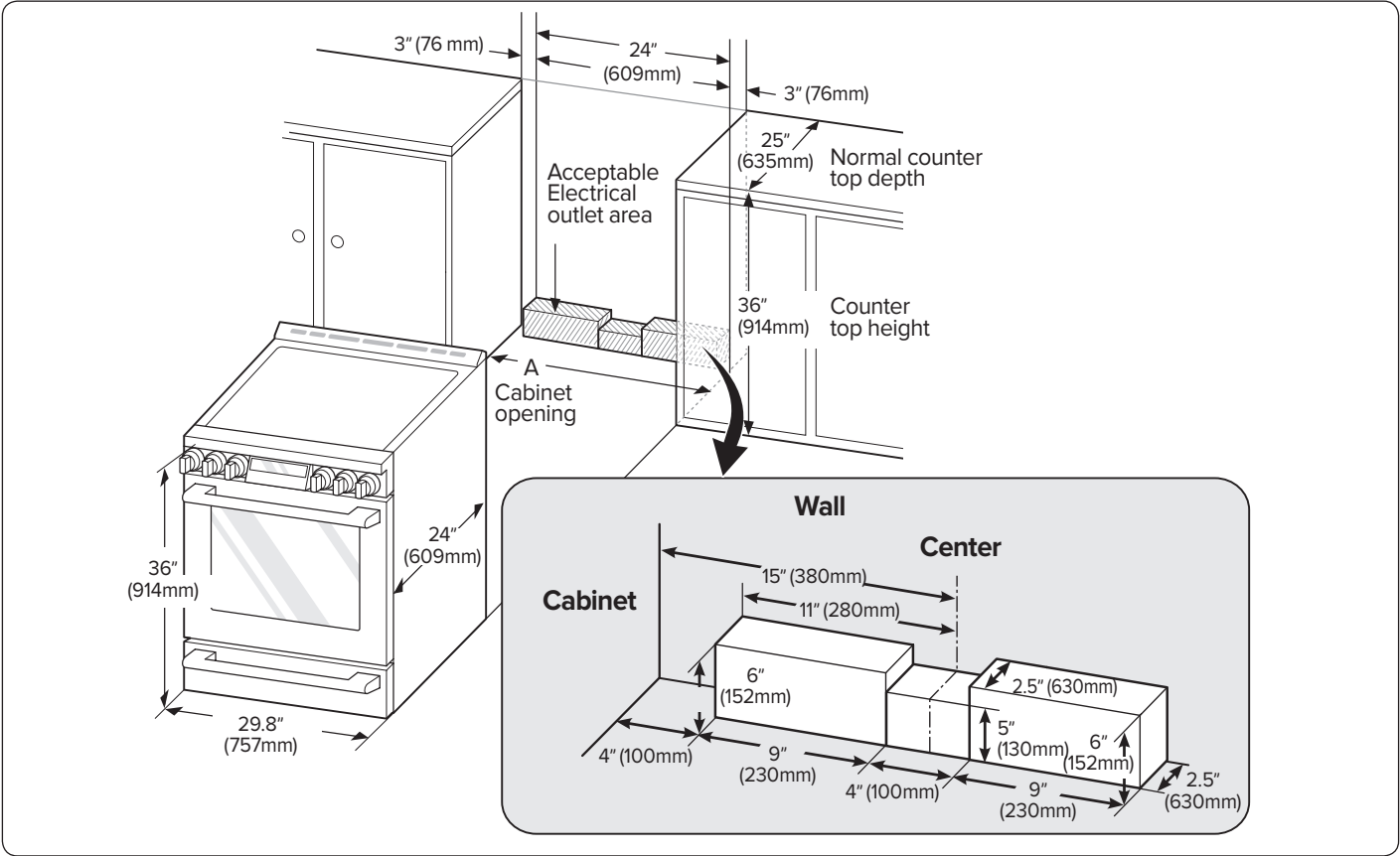
## TOTAL POWER

KW & Amp Rating at 240V	13.5KW
Requirements	240V

## SAFETY FEATURE

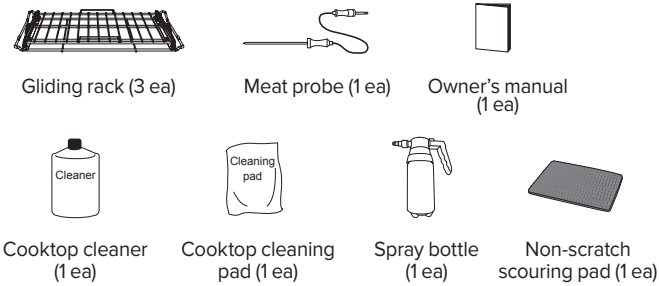
Door Lock	Yes
-----------	-----

DIMENSIONS AND CLEARANCES

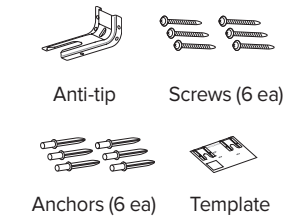


ACCESSORIES

- Included Accessories



- Anti-tip kit



Optional Accessories

